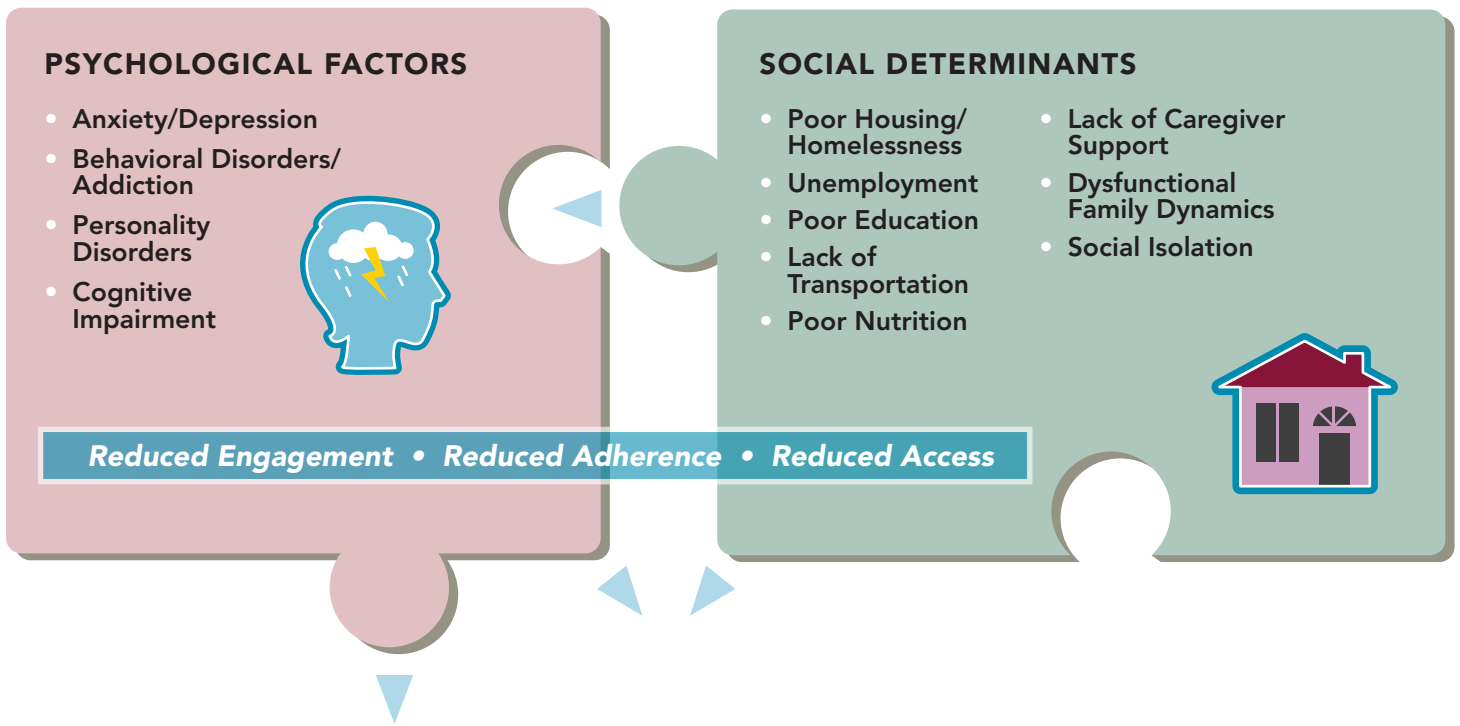


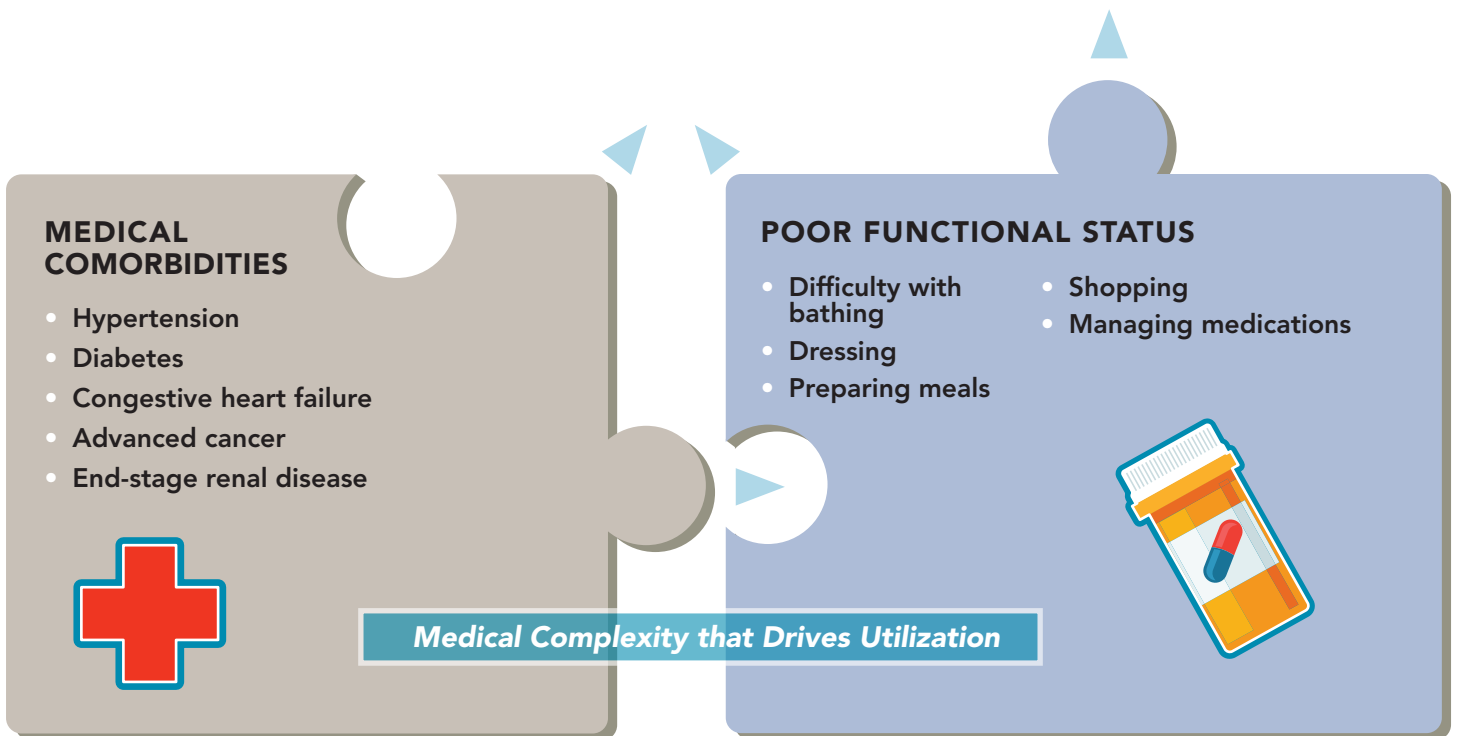
The Problem

A small percentage of patients drive the majority of healthcare cost due to a high degree of medical, psychological, functional and social complexity.



Readmissions Are Not the Problem.

Avoidable utilization occurs when patients with medical complexity have unmanaged psychosocial challenges.



The Solution

Our program empowers individuals and communities to manage these complex issues increase self-sufficiency, generate improved health outcomes, and reduce utilization of high-cost medical services.

Patient Profile



REFERRAL SOURCES

Four primary referral sources are:

1. Recent hospital discharges deemed high risk for readmission
2. Care management programs for high utilizers of acute health care services
3. Primary care physician referral of complex patients
4. Existing transitional care programs lacking a community-based care component



Referral Information

Information required for referral includes basic demographic data (name, address, best contact person and number, date of birth); clinical information including diagnoses codes or recent hospital discharge date and discharge diagnosis. Optional but useful data includes severity of illness score, complete list of ICD-10 codes, active medication list and care plan gaps.

HOW COMMUNITY HEALTH WORKERS CAN HELP:

Build trust.

Engage patients in healthy lifestyle choices.



Reinforce culturally appropriate health education and warning signs.

Coordinate care to complement other providers.



Establish primary care provider relationship.

Assist with acquiring medical supplies.



Offer psychosocial support.

Connect patient with community resources to remove barriers.

Provide transportation to appointments and pharmacy.



To watch a video on this program, visit <http://bit.ly/maximtransitionassist>.
For more information, visit www.maximhealthcare.com

